

## WESTERN TOWNS/MUSEUMS

**Rawhide\*** 5700 W. North Loop Rd., Chandler - 480-502-5600  
www.rawhide.com.

**Queen Mine Tours** 478 Dart Rd., Bisbee - 520-432-2071  
www.queenminetour.com.

**Gold Field Ghost Town** 4650 N. Mammoth Mine Road, Apache Junction - 480-983-0333 - www.goldfieldghosttown.com.

**Superstition Mountain Lost Dutchman Museum** 4087 N. Apache Trail, Apache Junction, - 480-983-4888 - www.superstitionmountainmuseum.org.

**Tombstone Arizona** 383 E Allen St, Tombstone - 888-457-3929  
www.tombstonechamber.com.

**Sharlot Hall Museum (restored territorial Governor's Mansion)**  
415 W. Gurley St., Prescott, 928-445-3122 - www.sharlot.org.

**Pioneer Arizona Living History Museum\*** 3901 W. Pioneer Rd., Phoenix, 623-465-1052 - www.pioneer-arizona.org.

**Old Tucson Studio** 201 S. Kinney Rd., Tucson - 520-883-0100  
Western town used for movie/TV sets. www.oldtucson.com.

**Pueblo Grande Museum\*** 4619 E. Washington St., Phoenix - 602-495-0901  
www.pueblogrande.com.

**City of Oatman** SW of Kingman on Rt 66 - 928-768-6222  
Authentic western mining - town with burros roaming streets (you can feed them) and staged gunfights on weekends.  
www.oatmangoldroad.org.

## MUSEUMS/GARDENS

**Deer Valley Rock Art Center** 3711 W. Deer Valley Rd., Phoenix - 623-582-8007  
- www.dvrac.asu.edu.

**Desert Botanical Garden\*** 1201 N. Galvin Pkwy, Phoenix - 480-941-1225  
www.dbg.org.

**Musical Instrument Museum\***, 4725 E. Mayo Blvd., Phoenix - 480-478-6000,  
www.mim.org.

**Heard Museum\***, 2301 N. Central Ave., Phoenix - 602-252-8840  
www.heard.org.

**Children's Museum of Phoenix\***, 215 N. 7 St., Phoenix - 602-253-0501,  
www.childrensmuseumofphoenix.org.

**Arizona Doll & Toy Museum\***, 5847 W Myrtle Ave, Glendale - 623-939-6186  
www.arizonadollandtoymuseum.com

**i.d.e.a. Museum\***, 35 N. Robson St., Mesa, 480-644-2467  
www.ideamuseum.org.

**Hall of Flame Museum of Firefighting\***, 6101 E. Van Buren St., Phoenix, 602-275-3473. www.hallofflame.org

**Pueblo Grande Museum & Archeological Park\*** 4619 E. Washington St., Phoenix, 602-495-0901.

## SPECIAL DINING EXPERIENCES

**Organ Stop Pizza\*** 1149 E. Southern Ave., Mesa - 480-813-5700  
www.organstoppizza.com. Home of the mighty Wurlitzer - 6000 pipes, including Xylophone, drums, glockenspiel, & more.

**Blazin 'M Ranch** 1875 Mabery Ranch Road, Cottonwood - 800-937-0643  
www.blazinm.com. Chuck wagon suppers and western stage show.

**Amazing Jakes Pizza Factory\*** 1830 E. Baseline Road, Mesa - 480-926-7499,  
www.amazingjakes.com.

## AUTO/AVIATION/TRAIN

**Westwind Air Service\*** 732 W. Deer Valley Rd., Phoenix - 480-991-5557  
www.westwindairservice.com

**Sedona Airtours** Sedona Airport - 928-282-3995  
www.sedonaairtours.com.

**Arizona Helicopter Adventures** 1200 Airport Rd., Sedona - 800-282-5141,  
www.azheli.com.

**Verde Canyon Railroad** 300 N. Broadway, Clarkdale - 800-582-7245,  
www.verdecanyonrr.com.

**Grand Canyon Railway** 233 N. Grand Canyon Blvd., Williams - 800-843-8742,  
www.thetrain.com.

**Maricopa Live Steamers\*** 23280 N. 43 Ave., Phoenix - 623-974-0125  
www.maricopalivesteamers.com.  
Free Sunday train rides - closed during summer.

**Arizona Wing Commemorative Air Force Museum\*** 2017 N. Greenfield Rd., Mesa 480-924-1940 - www.azcaf.org.

**McCormick-Stillman Railroad Park\*** 7301 E. Indian Bend Rd., Scottsdale, 480-312-2312 - www.therailroadpark.com

## MISCELLANEOUS

**Gateway Park\*** 10100 N. El Mirage Rd., El Mirage, 623-935-6405  
www.cityofelmirage.com. Skate park, splash park, playground & tot lot, concessions.

**Great Skate\*** 10054 N. 43rd Ave., Glendale, 623-842-1181  
www.unitedskates.com. Indoor roller rink with concessions.

**Rocket Fizz\*** 13681 Litchfield Rd, #122, Surprise, 623-546-3499, www.rocket-fizz.com. Old time candy & soda.

**Sweeties Candy of Arizona\*** 1050 W. Chandler Blvd, Ste 2, Chandler, 480-899-4245,  
www.sweetiescandyaz.com.

**\*Activities approximately one hour or less from Sun City West.**

## ARCADES/AMUSEMENT PARKS/SPORTS

**AZ on the Rocks\*** 16447 N. 91st St., Scottsdale - 480-502-9777  
www.azontherocks.com. Indoor climbing gym.

**Cracker Jax\*** 16001 N. Scottsdale Rd., Scottsdale, 480-998-2800, www.crackerjax.com. Laser tag, go-karts, batting cages, bumper boats, etc.

**Castles N Coasters\*** 9445 N. Metro Parkway, Phoenix - 602-997-7575  
www.castlesncoasters.com. Out-door amusement park.

**AZ Ice Peoria\*** 15829 N. 83 Ave., Peoria - 623-3341200  
www.azicepeoria.com.

**Great Skate\*** 10054 N. 43rd Ave., Glendale - 623-842-1181  
Roller Skating.

**Enchanted Island Amusement Park\*** 1202 W. Encanto Blvd., Phoenix 602-254-1200 - www.enchantedisland.com. For kids ages two to 10.

**Uptown Alley\*** 13525 N. Litchfield Rd., Surprise - 623-975-7529,  
www.uptownalleysurprise.com.  
Bowling, pizza, arcade, & laser tag.

**Jambo Park\*** 12046 N. 32nd St., Phoenix - 602-2744653,  
www.jambopark.com. Indoor amusement park, laser tag, etc.

**SkyZone Indoor Trampoline Park\*** 9040 W. Larkspur Dr., #134, Peoria 623-979-4000 - www.skyzone.com/peoria.

## SCIENCE/ARCHAEOLOGY/RUINS

**Lowell Observatory** 1400 W. Mars Hill Rd., Flagstaff - 928-774-3358  
www.lowell.edu.

**Biosphere** 32540 S. Biosphere Rd., Tucson - 520-838-6200  
www.b2science.org.

**Meteor Crater**, Flagstaff - 928-289-5898  
www.meteorcrater.com.

**Besh-Ba-Gowah Archaeological Park** 1324 S. Jesse Hayes Rd., Globe 928-425-0320 - www.globeaz.gov/visitors/besh-ba-gowah

**Challenger Space Center\*** 21170 N. 83 Ave., Peoria - 623-322-2001  
www.azchallenger.org.

**Deer Valley Rock Art Center\*** 3771 W. Deer Valley Rd., Phoenix www.dvrac.asu.edu., 623-582-8007.

**Arizona Science Center\*** 600 E. Washington St., Phoenix, 602-716-2000  
www.azscience.org.

**Hassayampa River Preserve\*** 49614 N. US Hwy. 60, Wickenburg - 928-684-2772  
www.nature.org/hassayampa. A desert oasis.

**Gilbert Riparian Institute** 10919 S. Central Ave., Phoenix - 602-262-7393  
www.phoenix.gov.

**South Mountain Park\*** 13525 N. Litchfield Rd., Surprise - 623-975-7529  
www.phoenix.gov/parks/trails/locations/south.

## BOATING/WET STUFF

**Arizona River Runners** 800-477-7238 - [www.raftarizona.com](http://www.raftarizona.com).

**Dolly Steamboat** 16802 Arizona 88, Tortilla Flat - 480-827-9144, [www.dollysteamboat.com](http://www.dollysteamboat.com).

**Desert Voyagers\*** (Rafters), 3244 E. Thomas Rd., Phoenix - 480-998-7238, [www.desertvoyagers.com](http://www.desertvoyagers.com). Half-day scenic rafting through Sonoran Desert.

**Wet 'n Wild\*** 4243 W. Pinnacle Peak Rd., Glendale - 623-201-2000 [www.wetnwildphoenix.com](http://www.wetnwildphoenix.com).

**Big Surf** 1500 N. McClintock Dr., Tempe - 480-994-2297 [www.bigsurffun.com](http://www.bigsurffun.com).

**Golfland/Sunspalsh** 155 W. Hampton Rd., Mesa - 480-834-8319 [www.golfland.com](http://www.golfland.com). Mini golf course, wave pool, tubing, arcades, & more.

**Kiwanis Recreation Center & Wave Pool\*** 6111 S. All-American Way, Tempe 480-350-5201. Float-in movies - call for info.

**Salt River Recreation** 9200 N. Bush Hwy., Mesa - 480-984-3305 [www.saltrivertubing.com](http://www.saltrivertubing.com). Tube down the Salt River.

## ZOOS/AQUARIUM/ANIMAL PARKS

**Out of Africa** 3505 W. State Route Hwy. 260, Camp Verde - 928-852-4577 [www.outofafricapark.com](http://www.outofafricapark.com).

**Wildlife World Zoo & Aquarium\*** 16501 W. Northern Ave., Litchfield Park 623-935-9453 - [www.wildlifeworld.com](http://www.wildlifeworld.com).

**Phoenix Zoo\*** 455 N. Galvin Parkway, Phoenix - 602-273-1341 [www.phoenixzoo.org](http://www.phoenixzoo.org).

**Bearizona** 1500 E. Rt. 66, Williams - 928-635-2289 [www.bearizona.com](http://www.bearizona.com).

**Sea Life Aquarium\*** 5000 S. Arizona Mills Circle, Tempe - 480-478-7600, [www.visitsealife.com/Arizona](http://www.visitsealife.com/Arizona).

**The Grand Canyon Deer Farm** 6769 Deer Farm Rd., Williams - 928-635-4073, [www.deerfarm.com](http://www.deerfarm.com).

## THEATRE/MOVIES

**Great Arizona Puppet Theatre\*** 302 West Latham St., Phoenix 602-262-2050 - [www.azpuppets.org](http://www.azpuppets.org).

**Childsplay** 900 S. Mitchell Dr., Tempe - 480-921-5700 [www.childsplayaz.org](http://www.childsplayaz.org).

**Phoenix Theatre\*** 100 E. McDowell Rd., Phoenix 602-254-2151 [www.phoenixtheatre.com](http://www.phoenixtheatre.com).

**Digiplex Surprise Point** 14 & IMAX\*, 13549 N. Litchfield Rd., Surprise 623-584-3838.

**\*Activities approximately one hour or less from Sun City West.**

## HORSEBACK/JEEP TOURS

**Cave Creek Horse Trail Rides\*** 37019 N. 32nd St., Cave Creek - 623-742-6700 [info@cavecreektrailrides.com](mailto:info@cavecreektrailrides.com).

**A Day in the West** 252 N. Hwy, 89A, Sedona - 800-973-3662 [www.adayinthewest.com](http://www.adayinthewest.com).

**BC Jeep Tours\*** 56558 Rancho Casitas Rd., Wickenburg - 928-684-7901 [www.bcjeeptours.com](http://www.bcjeeptours.com).

**Pink Jeep Tours** 204 N. Hwy, 89A, Sedona - 800-873-3662 [www.pinkjeep.com](http://www.pinkjeep.com).

**White Tanks Riding Stables\*** 20300 W. Olive Ave., Waddell - 623-935-7455 (seasonal).

## BASEBALL SPRING TRAINING

(MARCH GAMES)

**Surprise Recreation Campus\***, 623-222-2000

**Peoria Sports Complex\***, 623-773-8700

**Goodyear Ballpark\***, 623-882-3120

**Camelback Ranch\***, 623-302-5000

**Hohokam Park**, 480-644-4451

**Maryvale Baseball Park**, 602-534-6449

**Salt River Field**, 480-270-5000

## PARKS

**Lake Pleasant\*** 99th Parks Ave. N., 928-501-1710 watercraft rental, hiking, picnic, camping.

**White Tank Mountains\*** take Olive Ave. heading West. Many hiking trails, Sonoran desert landscape, Indian petroglyphs, hiking trails.

**Cave Creek Regional Park\*** 37019 Lava Ln., Cave Creek - 623-465-0431, [www.maricopa.gov/parks/cave\\_creek](http://www.maricopa.gov/parks/cave_creek).

**Rio Vista\*** 8866 W. Thunderbird Blvd., Peoria, 623-773-7137. Ball fields, fishing, splash park.

**Kartchner Caverns State Park**, Benson - 520-586-2283 (reservations) [www.azstateparks.com](http://www.azstateparks.com).

## FACTORY TOURS

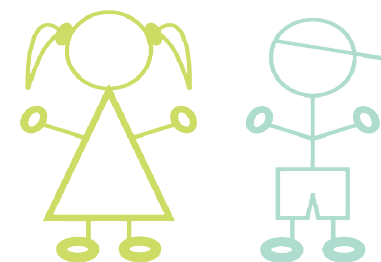
**Cerreta Candy Company\*** 5345 W. Glendale Ave., Glendale, 623-930-9000.

**Ping Manufacturing\*** 2201 W. Desert Cove Ave., Phoenix - 602-687-5000. 90-minute tour of how golf clubs are made.

**Stuffington Bear Factory\*** 1717 E. McDowell Rd., Phoenix -602-225-9513 This is an actual stuffed-animal manufacturer—see huge rolls of fur and cutting machines. 20-minute tours are Free, but for \$10 and up, you can make your own plush toy!



Things to do with



The Grand Kids

in

Sun City West, AZ



**Lona King, Realtor**

13551 W Camino Del Sol, Sun City West, Arizona 85375

623-203-6271

[lonaking@cox.net](mailto:lonaking@cox.net)